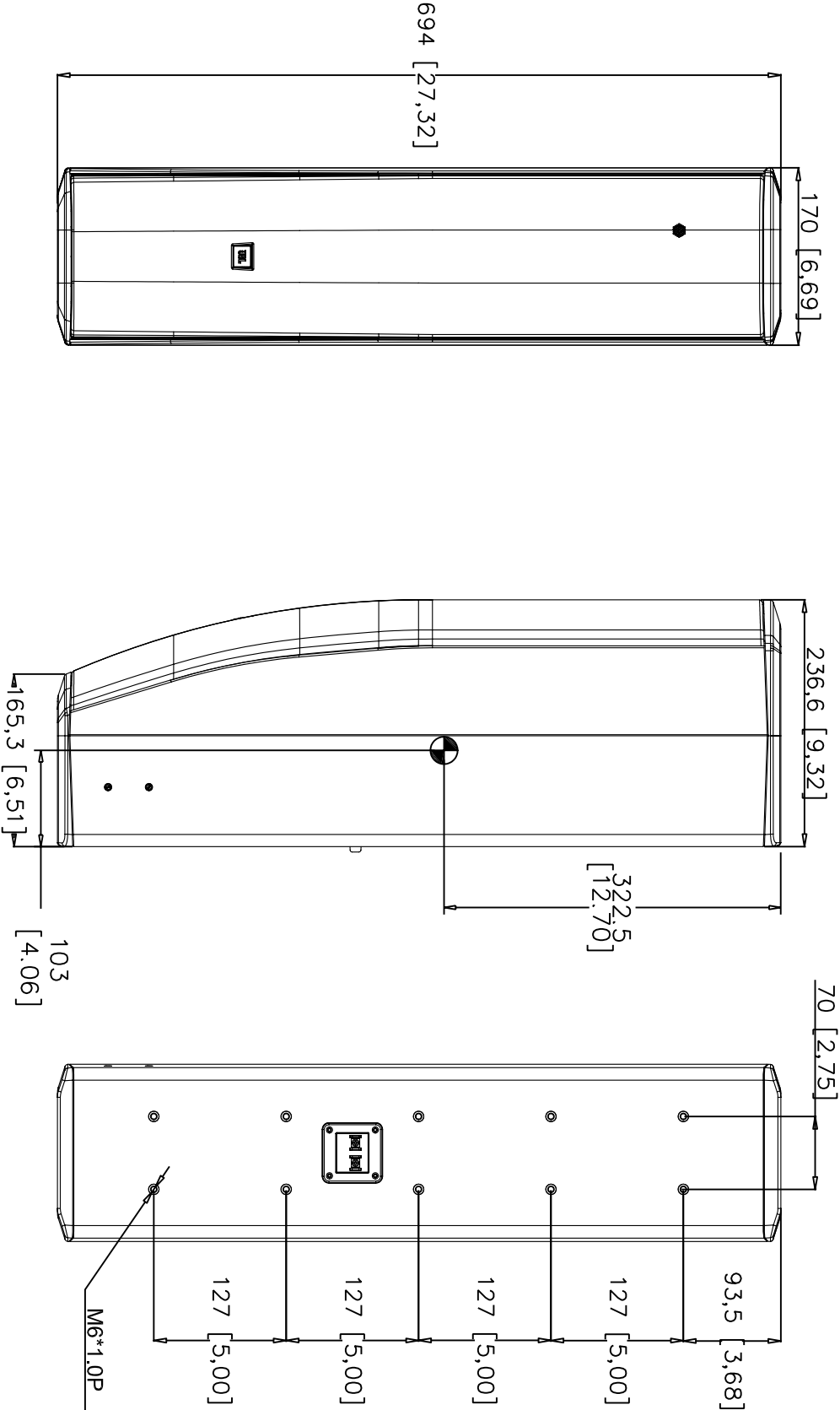
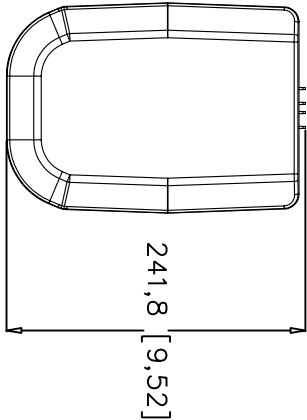



THESE DRAWINGS AND SPECIFICATIONS ARE THE PROPERTY OF JBL INCORPORATED. THEY ARE ISSUED IN STRICT CONFIDENCE AND SHALL NOT BE REPRODUCED OR USED AS THE BASIS FOR MANUFACTURE OR APPARATUS WITHOUT WRITTEN PERMISSION.

ALL MATERIAL SPECIFIED ON THIS DRAWING SHALL COMPLY WITH EUROPEAN DIRECTIVE 2002/95/EC. **RoHS**

REVISIONS					
CHG	LTR	DESCRIPTION	DWPT	D/C	DATE
38815	A	RELEASE TO MARKETING	FL		



1. COMPONENTS: 4 X 5" WOOFER
 2. INPUT CONNECTORS: BARRIER STRIP3
 3. GRILL: PERFORATED UV RESISTANT PAINTED ALUMINUM
 4. MATERIALS: CABINET GLASSFILLED ABS
 5. FINISH: UV RESISTANT PAINT
 6. RIGGING SYSTEM: 10 X M6 INSERTS ON REAR PANEL OR INCLUDED WALL BRACKET.
 7. WEIGHT: 9.5kg (21lbs)
 8. CENTER OF GRAVITY (CG)
- NOTES: (UNLESS OTHERWISE SPECIFIED)

TOLERANCES (UNLESS OTHERWISE SPECIFIED)		JBL PROFESSIONAL A Harman International Company Northridge, California 91329 U.S.A.	
X.XX ± .063 INCH		<div></div>	
X.X ± .125 INCH			
ANGULAR TOLERANCE OF 0°-30°			
FRACTIONAL DIMENSIONS ± 1/32		CUSTOMER DRAWING: CBT 70J	
* DIMENSIONS ARE INCHES		SIZE	DRAWING NO.
* ALL DIMENSIONS ARE FINISHED DIMENSIONS		A	444438
* DO NOT SCALE DRAWING			REV
			A
SCALE	NTS	SHEET	1 OF 1

A

B

C

D

A

B

C

D